



# SEDA's New Fellowship Pathway

## Professional development for academic developers using our Professional Development Framework

Stephen Bostock  
[s.j.bostock@keele.ac.uk](mailto:s.j.bostock@keele.ac.uk)

Ruth Pilkington  
[RMHPilkington@uclan.ac.uk](mailto:RMHPilkington@uclan.ac.uk)

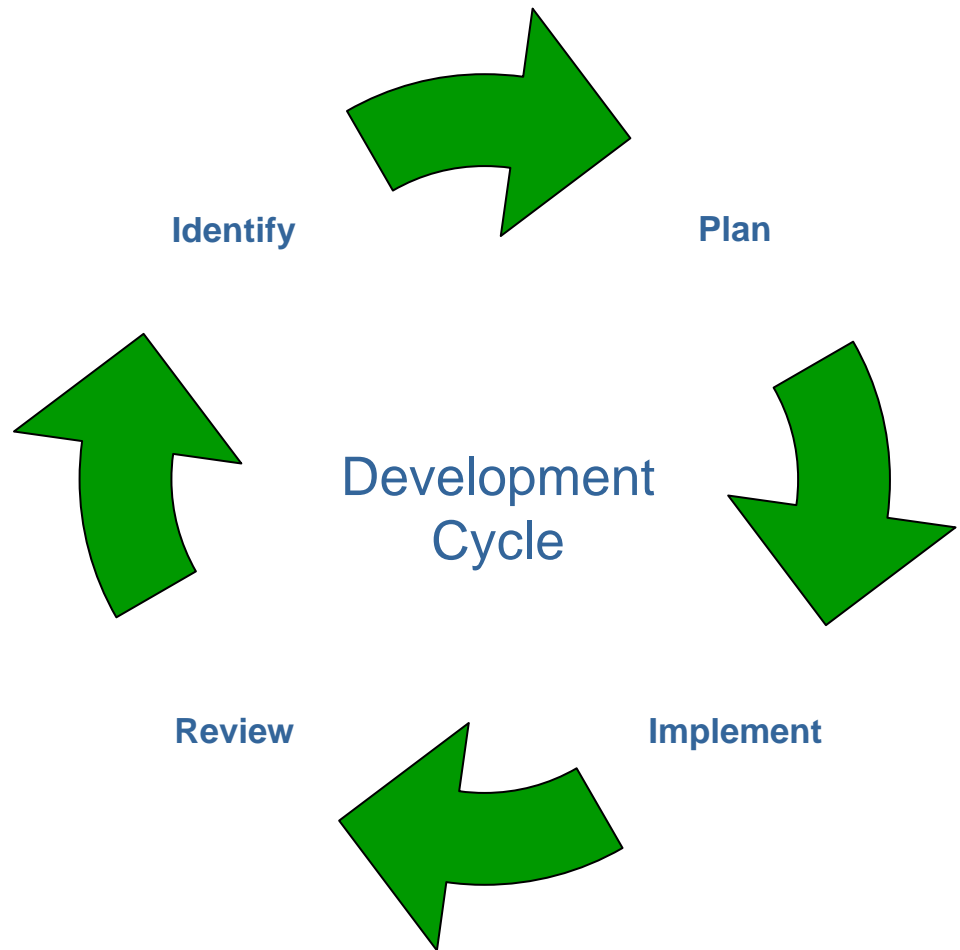


# SEDA PDF

- SEDA PDF can guide and structure CPD Frameworks for individual HEIs
- 15 awards recognise a range of roles and academic functions, and career development
- Awards operate inclusively to embrace a whole institution and its staff
- Awards are values-driven to respond to personal and professional needs, and to enhance practice

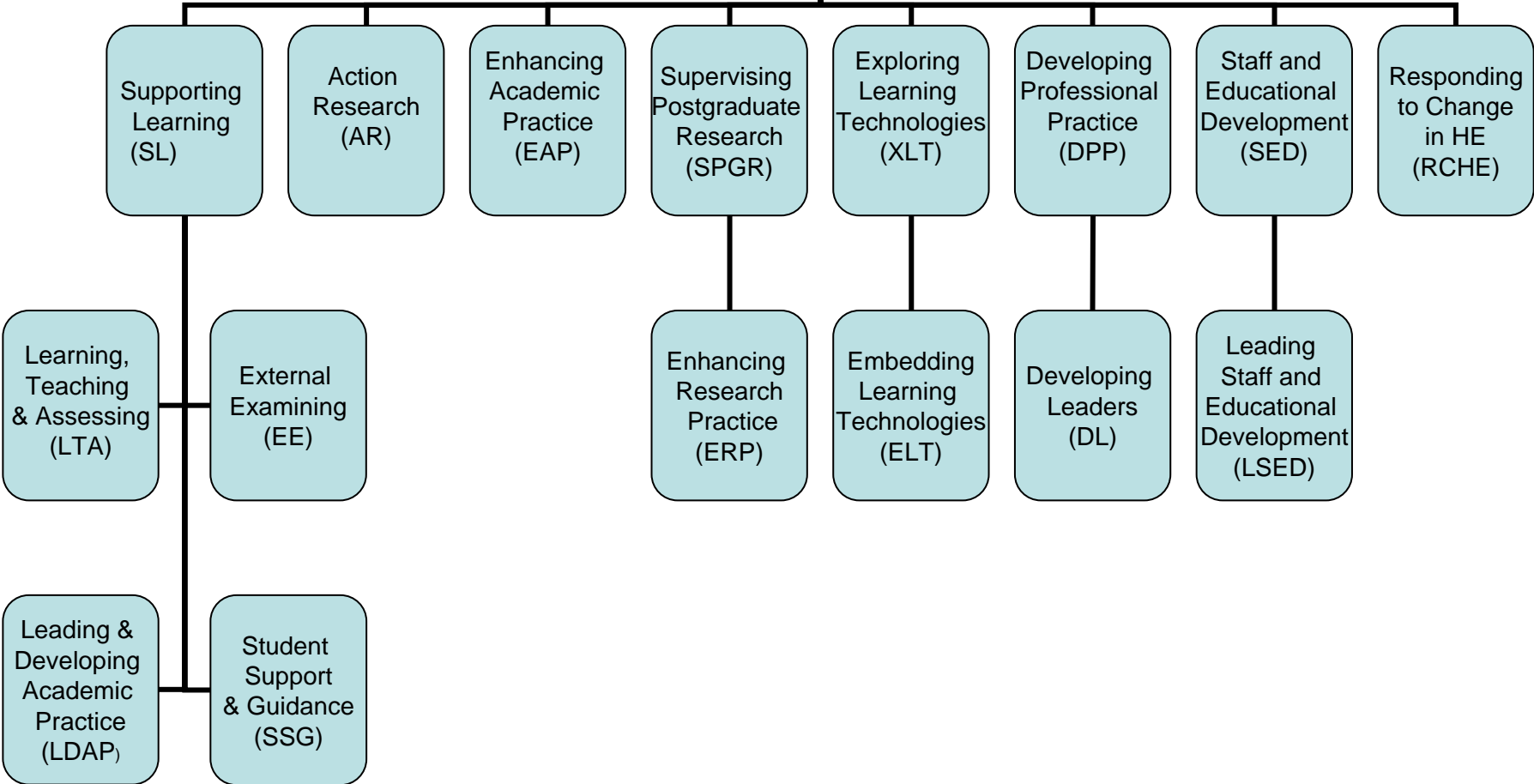
# How SEDA PDF Awards work

1. **Values-led  
(PDF Values map  
directly on to UK PSF)**
2. **Common core  
outcomes based on  
development cycle**
3. **‘Level-free’ specialist  
outcomes for each  
award reflect role,  
functions, professional  
needs**





**SEDA  
PDF  
Awards**





# PDF for Staff & Educational Developers

## CURRENT

- Existing awards in PDF
  - EE, LDAP, ERP, SED, LSED, ELT, RCHE
- Fellowship by portfolio
- Associate Fellowship using SEDA on-line courses
- Membership

## NEW

- Awards, but also
- A professional body Fellowship option using AFSEDA, FSEDA and SFSEDA

This aligns with UK PSF and complements what has been introduced for HE sector teaching and learning support staff through The HEA.

<i>Current fellowships</i>	<i>New fellowships</i>	<i>Recognised by PDF awards</i>
Fellow FSEDA	Senior Fellow SFSEDA	SFSEDA (new)
Associate Fellow AFSEDA	Fellow FSEDA	SED, LSED (current)
	Associate Fellow AFSEDA	AFSEDA (new)

# New Options for the SEDA community

## AFSEDA

- This will be a choice upon taking up membership
- demonstrate active participation in SEDA as through, e.g. attending conferences, courses, workshops, etc
- Process of reflection on CPD?

## FSEDA

- of current AFSEDA process (online course)
- Recognises commitment and work required
- Annual CPD reporting



# The New SFSEDA

## Current FSEDA

- Portfolio
- Mentored
- Lengthy
- Low numbers currently

## NEW SFSEDA

- More structured
- Cohort support
- On-line support
- Driven by new PDF award
- Reflects real nature of current FSEDA

# Some questions to consider

1. For new AFSEDA: what reporting of professional development would be usefully developmental and provide good standing?
2. For new FSEDA: what variety of courses should be provided?
3. For new SFSEDA: do the specialist outcomes ring true? What should the programme look like?
4. Are any of the three new fellowship levels attractive to and realistic for you?