

Introduction to Teaching and Learning at Keele 2010

Dr Stephen Bostock
Head of the Learning Development Unit

Keele's Philosophy

- ◆ History: Foundation year, Dual honours
- ◆ New Degree Structure 2009-10
- ◆ Strategic plan 2010-2015, under review
- ◆ Learning and Teaching Strategy 2007-10-11
Assessment Strategy 2008 ...
- ◆ Aims for undergraduate courses 2005
- ◆ Employability skills, graduate attributes
- ◆ Disability, Equal Opps, Widening Participation
policies
- ◆ For 2012-13: the Keele Curriculum + L&T Strategy

3

L&T Strategy 2007-11

- Goal 1 Promoting a distinctive academic programme
- Goal 2 Supporting the transition to university
- Goal 3 Supporting wider participation in higher education
- Goal 4 Strengthening links between teaching and research
- Goal 5 Integrating eLearning into the student experience
- Goal 6 Developing best practice in assessment
- Goal 7 Developing employability skills
- Goal 8 Supporting staff in their professional activities
- Goal 9 Supporting innovation in learning and teaching

4

Graduate Attributes

<http://www.keele.ac.uk/studentdevelopment>

"Through full engagement in your chosen programme of study and other educational opportunities, you will have the opportunity to develop the following capabilities:

- 1.An open and questioning approach to ideas, demonstrating curiosity, independence of thought and the ability to appreciate a range of perspectives on the natural and social worlds
- 2.An appreciation of the development and value of your chosen subjects of study, awareness of their contexts, the links between them, and awareness of the provisional and dynamic nature of knowledge
- 3.Information literacy: the ability to locate, evaluate and synthesise large amounts of frequently conflicting information, ideas and data
- 4.The ability creatively to solve problems using a range of different approaches and techniques, and to determine which techniques are appropriate for the issue at hand
- 5.An appreciation of the social, environmental and global implications of your studies and other activities, including recognition of any ethical implications
- 6.The ability to communicate clearly and effectively in written and verbal forms for different purposes and to a variety of audiences
- 7.The knowledge, skills, self-confidence and self-awareness actively to pursue your future goals
- 8.The ability and motivation to participate responsibly and collaboratively as an active citizen in the communities in which you live and work
- 9.A professional and reflective approach, including qualities of leadership, responsibility, personal integrity, empathy, care and respect for others, accountability and self-regulation
- 10.The flexibility to thrive in rapidly changing and uncertain external environments and to update skills and knowledge as circumstances require "

5

Employability skills

<http://www.keele.ac.uk/depts/aa/landt/docs/employabilityskills2010.pdf>

1. IT
2. Numeracy
3. Learning to Learn
4. Team working and leadership
5. Problem solving
6. Oral and visual communication
7. Written communication
8. Information handling
9. Research
10. Modern foreign language

6

L&T Structures

- ◆ L&T committees, Senate, Council
 - IT subgroup, VLE Steering Group, Pool Room coordination group, assessment review group...
- ◆ Support for L&T
 - VLE Steering Group
 - Students – CLASS
 - Ac Staff – Learning Development Unit, CPSD
 - Academic Services, Registry, Quality Assurance Office (NB: Reorganisation)
 - Audio Visual Services
 - Room bookings/timetabling

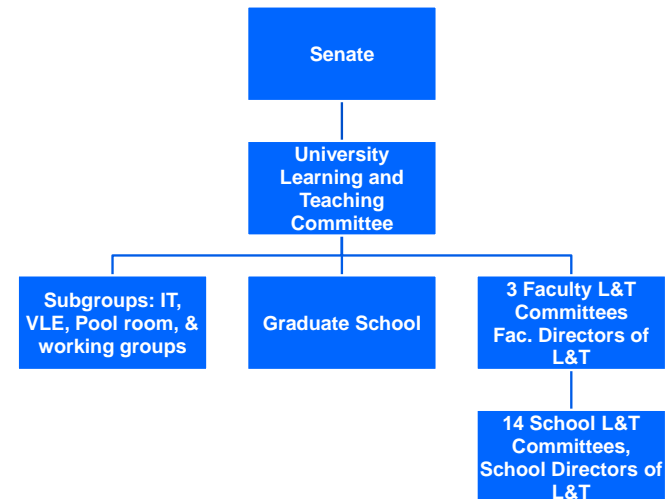
7

Central support for teaching & learning

- ◆ Learning Development Unit (in *Academic Services*) www.keele.ac.uk/depts/aa/landt/
- ◆ *Audio Visual Services* provide pool room facilities- help line 8470 (in *Finance and IT*)
- ◆ KLE administered by Information Services (in *Finance and IT*)
- ◆ TLHE and the MA in L&T in HE in the LDU
- ◆ Student support: CLASS (in *Human Resources*)
- ◆ QA Office (in new planning directorate)

8

The L&T committee structure



9

The Learning and Teaching Committee

Both programme approval/withdrawal and policy;
meets monthly.

Pro-VC Learning and Student Experience

3 Faculty Directors of L&T

3 Faculty PG directors of L&T

3 Senate reps

2 Student reps, UG and PG

In attendance:

Director of Academic Services, Head of LDU, Head of
QA Office, Dean of Graduate School, Librarian

10

Recent activity in ULTC

- ◆ Programme approval
- ◆ External examiner reports
- ◆ Assessment review and guidelines, NSS scores, feedback
- ◆ Use and evaluation of virtual learning environment
- ◆ Plagiarism report, changes to regulations
- ◆ Graduate attributes
- ◆ The student experience project
- ◆ KLE upgrade and maintenance downtime

11

Technology

- ◆ Keele Learning Environment: A virtual learning environment Blackboard 8 (also called WebCT) and e-portfolios
 - Moving to Bb9.1 ready for 2011-12, with a new e-Portfolio
 - Turnitin provides originality checking, online marking and feedback, and peer review, through the KLE; recently upgraded to *Turnitin2*
 - A digital repository (Intralibrary) for media, digitized copyright material, and research
- ◆ Most pool rooms with networked PCs and digital projectors, 10 with “Interactive Whiteboards”, Wi-fi in places
- ◆ 200 electronic ‘clickers’, and voting communicubes for large group interactivity, free from LDU
- ◆ Software licences for multimedia development, RefWorks reference manager, Talis Aspire for reading lists
- ◆ Equipment kits for loan from LDU

12

Innovation and excellence

- ◆ MA in L&T in HE: two of the three modules are action research modules
- ◆ Annual Teaching Excellence Awards
- ◆ Annual nominations for National Teaching Fellowships
- ◆ Annual funded Teaching Innovation Projects
- ◆ Annual Teaching Innovation Symposium
- ◆ Summer Newsletter: Highlights in L&T
- ◆ External speakers, e-learning workshops
- ◆ Funded projects: Open Educational Resources; Technology in assessment and feedback (STAF)

Funded Teaching Innovation Projects 2010-11

13

Nine teaching innovation projects have been selected for funding from the Learning Development Unit in 2010-11. A panel chaired by the Head of the LDU, with representation from the Faculties and senior management, and with an external member, selected the projects from 21 applications. The projects tackled issues such as internationalization, the design of assessment, virtual field trips for mobility-impaired students, and the transition to university. Other projects involved using technologies such as SMS txt messages, computer based assessment, and video games. Completed projects will be presented at the Teaching Innovation Symposium in late 2010-11.

- More details can be see at tinyurl.com/keeleprojects

Contacts

14

- ◆ The Learning Development Unit
s.j.bostock@keele.ac.uk, v.a.taylor@keele.ac.uk
- ◆ Your School Director of L&T
- ◆ In HumSS: the [learning development team](#)
- ◆ The [HE Academy](#) and [Subject Network web site](#) & newsletter
- ◆ Your professional body's education division

15

Reading

- Biggs, J. and Tang, C. 2007 *Teaching for quality learning at university* 3rd ed. SRHE
- Bostock, S.J. 2007 e-Teaching: engaging learners through technology, SEDA Paper 119
- Cowan J. 1998 *On becoming an innovative university teacher* SRHE
- Entwistle, N. 2009 *Teaching for Understanding at University*, Basingstoke: Palgrave
- Knight, P T 2002, *Being a teacher in HE* SRHE
- Jenkins, A., Breen R and Lindsay R 2003 *Reshaping teaching in HE* SEDA/Kogan Page
- Ramsden, P 2003 *Learning to teach in HE* 2nd ed. Routledge-Falmer